

# Khanbhadur Lallbibbi Welfare Trust



Interim Report  
(Oct 2005 - Feb 2006)

## **Mission**

Our mission is to provide an opportunity for better health and education for our deprived section of the society in the rural areas of Pakistan

## **Establishment**

Informally we are working for needy people of the rural area for over 18 years.

KLWT registered at No: 3310 on 22 September, 2003 under the Trust Act, 1882 by the Joint Sub Registrar, Islamabad.

# Projects

- Khanbhadur Lallbibbi Free Clinic
- Education Scholarships
- Earthquake Rehabilitation & Reconstruction

# Khanbhadur Lallbibi Free Clinic

The clinic is providing free treatment, medicines and follow-up care to patients every week.

Our aim is to contribute towards promoting healthcare and to minimize sufferings of the ailing humanity of the rural area.

## Free Camps:

KLWT also arranges free Eye camps on regular basis, and in future we are very interested to arrange free camps for Heart, Diabetics, and Hepatitis patients as well.

# Education Scholarships

We offer scholarships to students of deserving & vulnerable families for university education.

A comprehensive program is underway to support children of needy parents in primary and high schools of the rural areas.





# Earthquake Rehabilitation & Reconstruction Project

## Project Context:

On October 8, 2005 at 08:53 hours a powerful earthquake struck the northern part of Pakistan causing major destruction and playing havoc with millions of lives. The affected areas were the five districts of North West Frontier Province and four districts of Azad Jammu & Kashmir. More than 75,000 people lost their lives out of those 35,000 were children who were attending schools at that time. Most of the civil society infrastructure such as schools, colleges and hospitals were destroyed and require immediate attention.

The Government of Pakistan reports an estimated 30,000 sq km of Pakistan administered Kashmir and NWFP is affected by the Earth quake.

- Total death toll : 75,000
- Total injured: 70,000
- House destroyed: 70% and the remaining 30% are Damaged
- 3.5 million people have been affected by the disaster
- 0.8 million children 05-10years old affected by the earthquake
- 8,885 schools are damaged or destroyed.

Therefore, there is an urgent need to support the efforts of the Government of Pakistan and other organizations in Rehabilitation & Reconstruction of areas affected by the Earthquake.

**KLWT** has established an **Earthquake Rehabilitation & Reconstruction Fund** to provide long-term aid to those who have been left homeless.





# KLWT Project Areas

## Azad Kashmir

Muzaffarabad

Bhir Pani, Jabber, Darra (**Bagh**)

Jawa, Garrhi Dupatta (**Jhelum Valley**)

Nauseri (**Neelum Valley**)

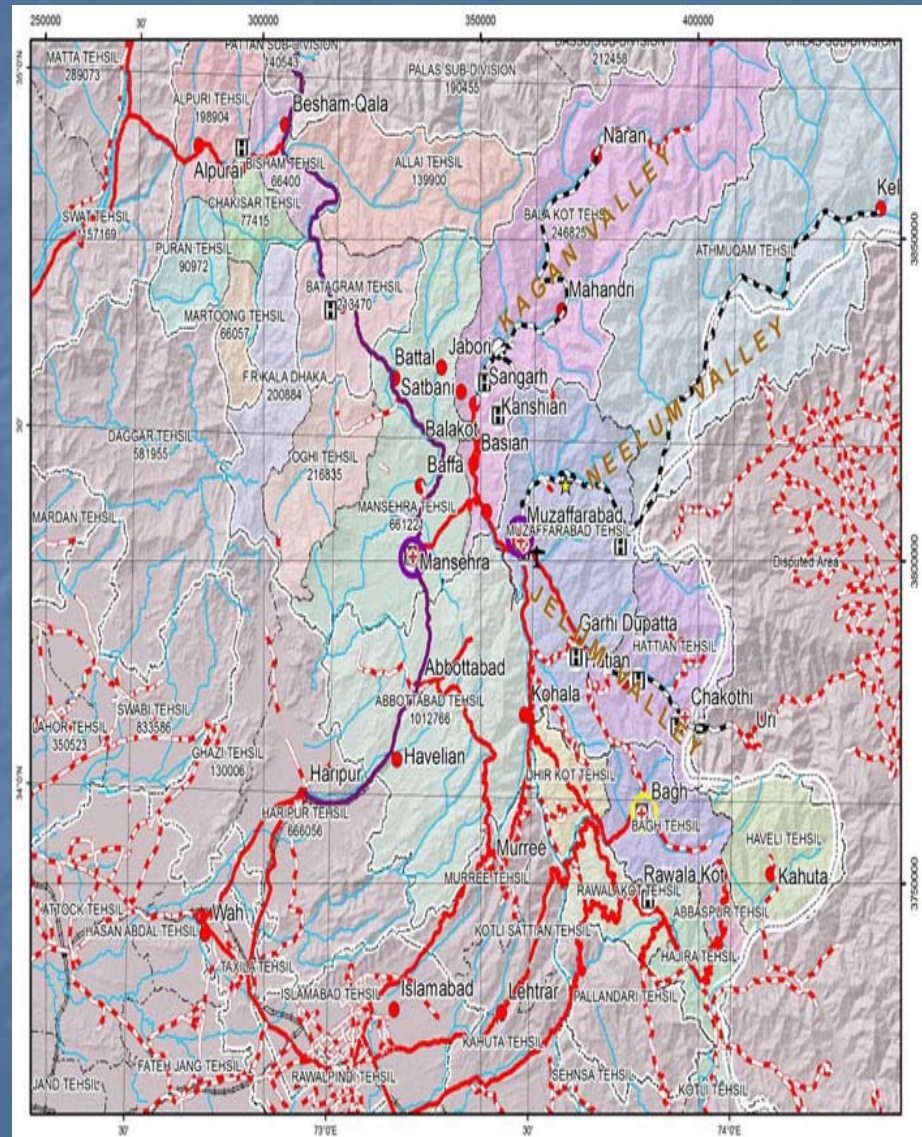
## NWFP

Garrhi Habibullah, Jabba, Balakot, Bhunja (**Kaghan valley**)

Bhirrh Bala, Bhirrh, Wallar Ghuth, Summ Banda, Rajmera (**Batgram**)

## Islamabad/ Rawalpindi

KLWT is Supporting  
Community centres,  
Health Centres and  
Earthquake response Organizations in this  
area.



**KLWT** is working on the following Programs under Earthquake Rehabilitation & Reconstruction Project

- Relief Program
- Health Program
- Shelter Program
- School Program
- Family Sponsorship Program

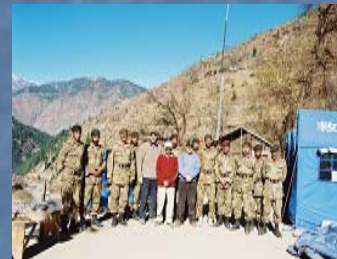


# KLWT Relief Program

After the earthquake the focus was on provision of food stuff and relief goods according to needs & weather conditions of the affected areas .

So far KLWT received  
**Rs: 1,829,939 (US\$ 30,499)**  
donation in shape of General  
Supplies.

KLWT directly purchased  
7,550Kg of Food items,  
2000 Quilts / Blankets,  
2500 Jackets and dispatched  
to Project Areas in NWFP &  
Azad Kashmir.





# KLWT Health Program

This program is designed to provide Medical aid to NGOs, Field hospitals, Govt hospitals and other earthquake response teams for survivors.

KLWT donated Equipments & medicines to the Following:

- Delivery of medicines to Child Advocacy International (Muzaffarabad) and Services of Specialist para-medical Mr. Tony Tobin
- PIMS, Islamabad.
- Islamic Relief (UK), Islamabad.
- Bali Memorial Hospital Islamabad
- 7000 doses of Anti Tetanus Globulin (ATG) donated to WHO, Pakistan
- G-6, G-9 Community Centers and NIST, Islamabad.
- Melody Rehabilitation Centre, Islamabad.
- Paraplegic Care Centre, DHQ Hospital, Rawalpindi

So far KLWT received **Rs: 1,110,000 (US\$ 18,500)**  
Donation in shape of Medical supplies is and KLWT directly purchased medical supplies of **Rs: 185, 000 (US\$ 3,085)** and despatch to Project areas.



# KLWT Shelter Program

This Program is a community based program .The focus of this program is to provide aid to survivors of the earthquake in shape of Tents , CGI sheets and Rebuilt tool kits for Winterized Shelters.

## Tentage Shelter

KLWT Provided Tented shelters in the following Areas

- Jabba Tented village, Balakot (NWFP)
- Batgram (NWFP)
- Bagh (AJK)
- Village Garrhi Dupatta, Jawa Jhelum Valley (AJK)
- Village Nauseri, Neelum valley (AJK)

So far KLWT directly purchased 850 Tents to provide shelter for 6800 people.





# Winterized Shelter

KLWT provided winterize shelters in shape of

- CGI Sheeting (One warm room per family)
- Self-build Tool Kits
- Insulation Materials
- Heating Elements

KLWT Provided 195 Shelters in the following Areas:

- Jabber, Darra and surrounding villages in Bagh (AJK).
- Jawa ,Jhelum Valley (AJK)
- Bhunja valley, Balakot (NWFP).
- Mansehra (NWFP)
- Village Bhirrh Bala, Bhirrh, Walarr Gutt, Summ Banda and Rajmera in Batgram (NWFP)

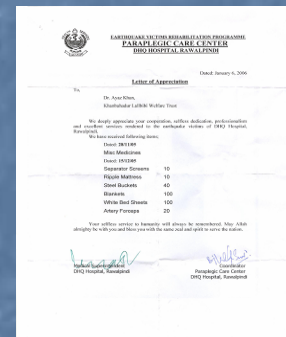




# Appreciation

KLWT received letters of thanks and appreciation from the following for provision of medical aid.

- PIMS, Islamabad on 15 Nov 2005.
- W.H.O. Country representative for the donation of 7000 doses of ATG on 21 Nov 2005.
- DHQ Hospital, Rawalpindi on 06 Jan 2006.



# Future Plans

KLWT to focus on helping the affected people get back into Life as soon as possible and provide Hope for future through the construction of Shelters, Schools & provision of medical aid in the earthquake areas.

## ■ Shelter Program:

Provision of CGI sheets, Repair tool kits & Heating elements for Winterized shelter.

## ■ School Program:

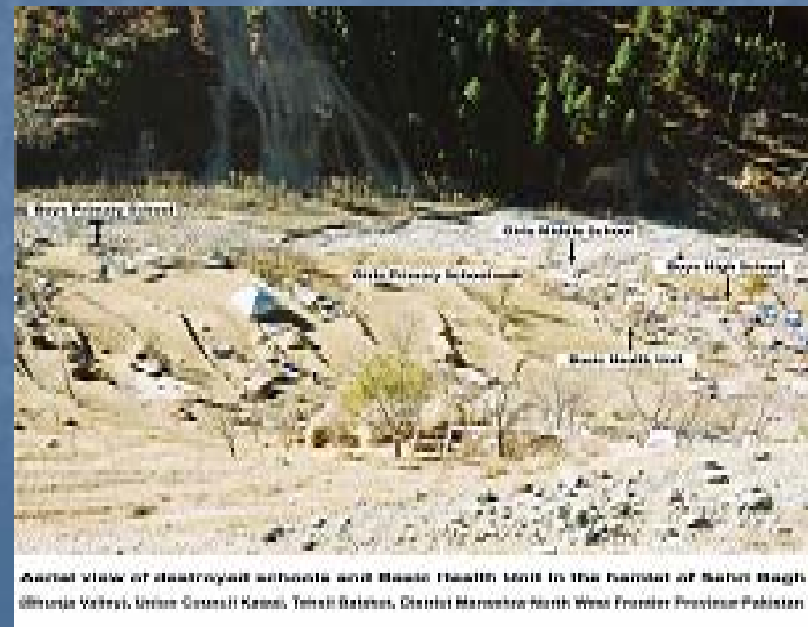
Establishment & Reconstruction of Schools at Bhunja valley, Balakot (NWFP).

## ■ Health Program:

Provision of Primary health care, Child & mother care and medical aid to other earthquake response teams.

## ■ Family Sponsorship Program: (Under Consideration)

Adopt / Sponsor / Support the deserving and vulnerable families.



**KLWT** highly Appreciate the Contribution of the **Volunteers** and staff, who work dedicatedly and tirelessly throughout the initial stage of the relief activities.





# Contribution

So far KLWT collected Cash Donation of  
**Rs: 14 Million (US \$233,333.00, GB £ 133,333.00)**  
and spent **Rs: 8.5 Million (US \$141,667.00, GB £ 80,9522.00)**  
on Earthquake Rehabilitation & Reconstruction Project.

Major contributions have been received from the following organizations:

- RMC (Rawalpindi Medical College) Alumni - UK
- SIAN Cymru (South Asian Earthquake Immediate Action Network Cymru) - Wales - UK
- The Management and Staff of Samin Textiles - Lahore
- The Management and Staff of Pakistan Baggages - Rawalpindi
- The Management and Staff of Interactive Communications - Islamabad
- The Management and Staff of Makkays - Islamabad
- The Managements Staff and students of The Institute of Legal Studies (TILS), Islamabad.
- The Staff of Ericsson Pakistan – Islamabad
- Maher Entertainment Ltd (Tall Trees) - UK
- Children of Islamic Nations (COIN) - Canada
- Bayer Inc. - Canada

For Further Information

[www.klwt.org](http://www.klwt.org)

[info@klwt.org](mailto:info@klwt.org)